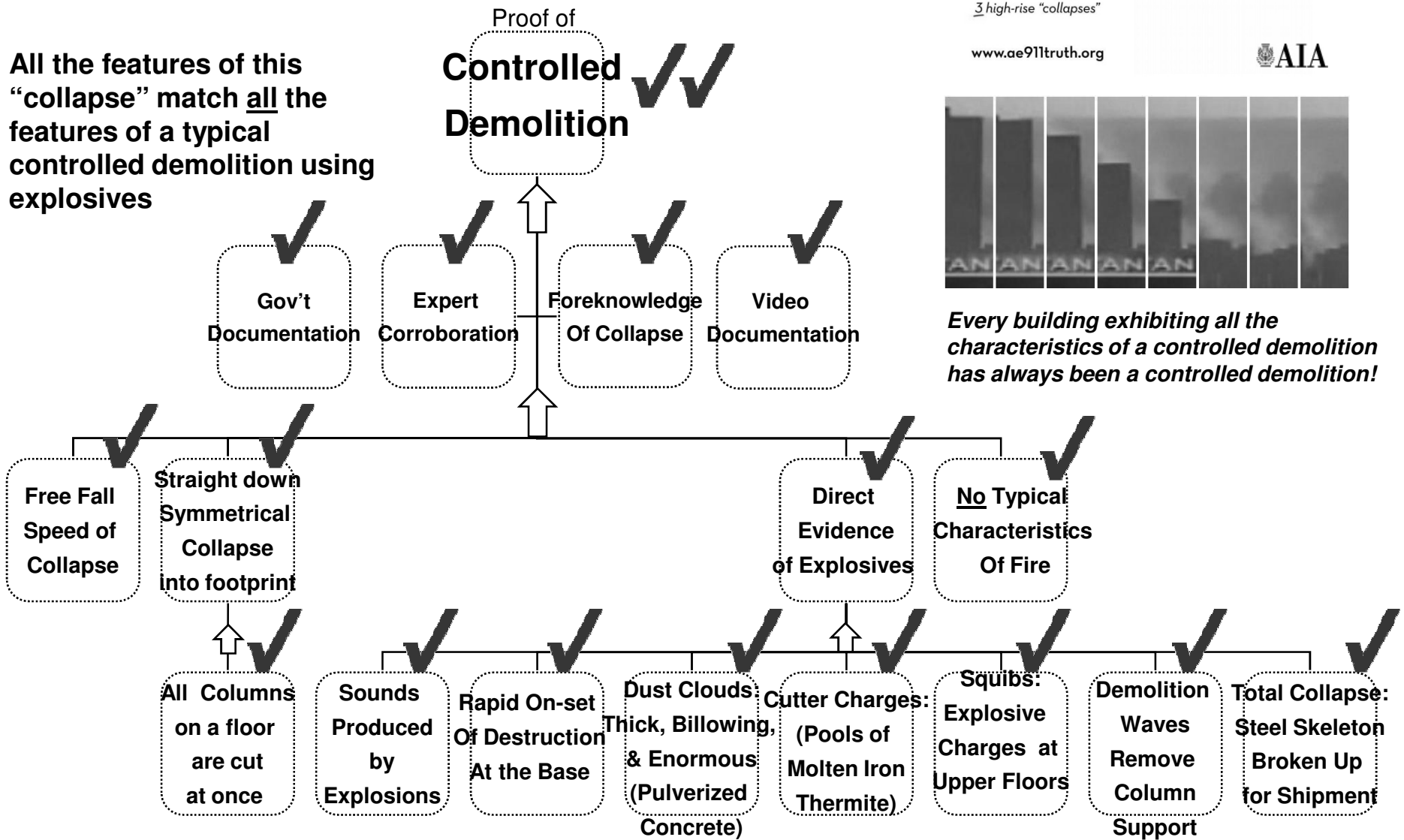


WTC Building #7:

The Hypothesis of Controlled Demolition is Fully Supported by the Evidence

All the features of this "collapse" match all the features of a typical controlled demolition using explosives

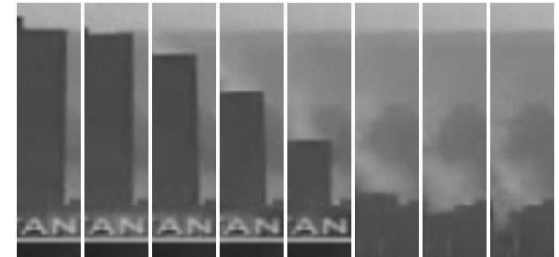


9/11: Re-examining the 3 high-rise "collapses"

www.ae911truth.org

ARCHITECTS & ENGINEERS FOR 9/11 TRUTH

Richard Gage, AIA, Architect



Every building exhibiting all the characteristics of a controlled demolition has always been a controlled demolition!

